



XHEZ.W-L-0061 - Through-penetration Firestop Systems

Design/System/Construction/Assembly Usage Disclaimer

- Authorities Having Jurisdiction should be consulted in all cases as to the particular requirements covering the installation and use of UL Certified products, equipment, system, devices, and materials.
- Authorities Having Jurisdiction should be consulted before construction.
- Fire resistance assemblies and products are developed by the design submitter and have been investigated by UL for compliance with applicable requirements. The published information cannot always address every construction nuance encountered in the field.
- When field issues arise, it is recommended the first contact for assistance be the technical service staff provided by the product manufacturer noted for the design. Users of fire resistance assemblies are advised to consult the general Guide Information for each product category and each group of assemblies. The Guide Information includes specifics concerning alternate materials and alternate methods of construction.
- Only products which bear UL's Mark are considered Certified.

XHEZ - Through-penetration Firestop Systems

See General Information for Through-penetration Firestop Systems

System No. W-L-0061

July 09, 2020

ANSI/UL1479 (ASTM E814)

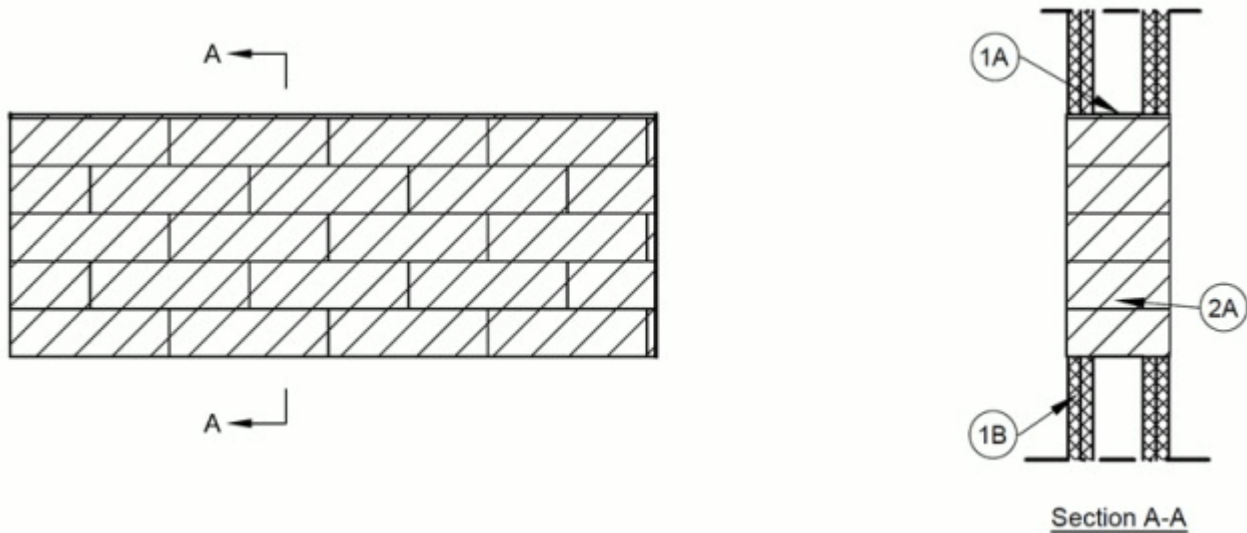
F Rating — 2 Hr
T Rating — 2 Hr

Cookies on UL

We use cookies to personalize content and ads, to provide social media features and to analyze our traffic. We also share information about your use of our site with our social media, advertising and analytics partners.. [Learn More](#)

[> Cookie Settings](#)

Accept



1. **Wall Assembly** — The 1 or 2 hr fire rated gypsum board/steel stud wall assembly shall be constructed of the materials and in the manner described in the individual U400, V400 or W400 Series Wall and Partition Designs in the UL Fire Resistance Directory and shall incorporate the following construction features:

A. **Studs** — Wall framing shall consist of steel channel studs. Studs to be min 2-1/2 in. (64 mm) wide and spaced max 24 in. (610 mm) OC. Additional studs shall be installed horizontally to form a rectangular box around the opening (Item 2).

B. **Gypsum Board*** — Thickness, type, number of layers and fasteners as specified in the individual Wall and Partition Design. Max area of opening is 384 in.² (2477 cm²) with a max dimension of 32 in. (813 mm).

The hourly F Ratings are dependent upon the hourly rating of the wall in which it is installed.

2. **Firestop System** — The firestop system shall consist of the following:

A. **Fill, Void or Cavity Material*** — Blocks installed with 5 in. (127 mm) dimension projecting through opening and centered in wall. Blocks to be firmly packed to fill the opening area.

TENMAT INC — Fire Protection Block FF260

B. **Fill, Void or Cavity Material*** — (Not shown) — Fill material to be forced between blocks and periphery of opening to the max extent possible from either surface of wall.

TENMAT INC — Fire Protection Foam FF360

*** Indicates such products shall bear the UL or cUL Certification Mark for jurisdictions employing the UL or cUL Certification (such as Canada), respectively.**

Last Updated on 2020-07-09

Cookies on UL
The appearance of a company's name or product in this database does not in itself assure that products so identified have been manufactured under UL's Follow-Up Service. Only those products bearing the UL Mark should be considered to be Certified and covered under UL's Follow-Up Service. We use cookies to personalize content and ads, to provide social media features and to analyze our traffic. We also share information about your use of our site with our social media, advertising and analytics partners.. [Learn More](#)

UL permits the reproduction of the material contained in the Online Certification Directory subject to the following conditions: 1. The Certificate Information, Assemblies, Constructions, Designs, Systems, and/or Certifications (files) must be presented in their entire leading manner, without any manipulation of the data (or Drawings). 2. The statement "Reprinted from the Online Certification Directory" must appear adjacent to the extracted material. In addition, the reprinted material must include a copyright notice in the following format: "© 2020 UL LLC"

✓ Accept