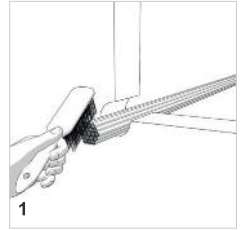


FF160 Fire Protection Plug

The UL listed systems for Fire Protection Plug FF160 and the respective local and federal regulations are authoritative for execution of the through penetration firestop system. Wear suitable protective gloves, safety glasses and protective clothing for the work.

Step 1

- Clean the component opening.
- Select the suitable size of the Fire Protection Plug FF160 for the component opening (2.5", 3", 4", 4.5" or 5").



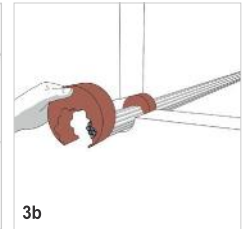
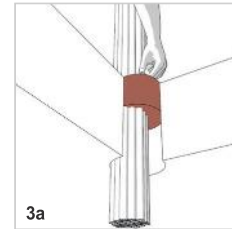
Step 2

- Cut Fire Protection Plug FF160 to the appropriate size for the penetrating elements.
- Individual cables can be forced through Fire Protection Plug FF160.
- We recommend a knife with a wide or narrow serrated blade for optimal cutting.



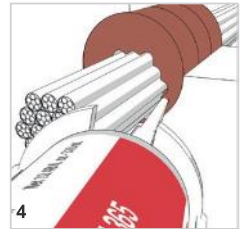
Step 3

- Insert the Fire Protection Plug FF160 that has been cut to size into the component opening so it is tightly seated and the outer circumference of the Fire Protection Plug FF160 is flush from top surface of floor (3a) or both surfaces of the wall (3b).



Step 4

- Interstices between penetrating items and open joints must be filled with Fire Protection Sealant FF365.
- After filling the interstices between the cables and open joints with Fire Protection Sealant FF365, these fillings can be smoothed with a brush moistened with water.



The UL listed systems for Fire Protection Plug FF160 and the respective local and federal regulations are authoritative for execution of the through penetration firestop system.

PRODUCT FOR INDUSTRIAL OR PROFESSIONAL USE ONLY.
KEEP AWAY FROM CHILDREN.



WARNING: This product is designed to be used by professional contractors familiar with the applicable federal, state, and local regulations and specifications concerning the installation of firestopping systems. Prior to handling this product, carefully read the safety data sheet and the following important health and safety warnings.

ALWAYS WEAR SUITABLE PROTECTIVE CLOTHING, PROTECTIVE GLOVES AND EYE PROTECTION. WHEN CUTTING THIS PRODUCT TO APPROPRIATE SIZE OR CREATING NEW OPENINGS FOR RETROACTIVE INSTALLATION, USER MAY CUT OR OTHERWISE HURT HIMSELF OR HERSELF. THEREFORE, USE EXTREME CAUTION WHEN CUTTING OR OTHERWISE MECHANICALLY PROCESSING THIS PRODUCT. IN ADDITION, WHEN CUTTING OR OTHERWISE MECHANICALLY PROCESSING THIS PRODUCT, SMALL PARTICLES MAY BE CREATED THAT MAY CAUSE IRRITATION TO THE EYES AND RESPIRATORY SYSTEM. THEREFORE, BE EXTREMELY CAREFUL TO AVOID DIRECT CONTACT, ESPECIALLY IF WORKING OVERHEAD. IF PRODUCT COMES INTO CONTACT WITH EYES: RINSE CAUTIOUSLY WITH WATER FOR SEVERAL MINUTES. REMOVE CONTACT LENSES, IF PRESENT AND EASY TO DO. CONTINUE RINSING. IF EYE IRRITATION PERSISTS: GET MEDICAL ATTENTION.

THE INGREDIENTS IN THIS PRODUCT MAY FORM DANGEROUS GASES AND VAPORS IN CASE OF FIRE. THESE INCLUDE AMMONIA, PHOSPHOROUS OXIDE, CARBON MONOXIDE AND CARBON DIOXIDE. SEEK MEDICAL ATTENTION IF EXPOSED.