

FF102/50Plus

Rainscreen Fire Block

Key Features

- NFPA285 Fire Tested
- UL Listed
- ETL Listed
- NYC OTCR/DOB approved material in accordance with the 2022 NYC Building Code Section 718.2.1
- Continuous Free Air Space up to 2" (50mm)
- Allows for air circulation and moisture dissipation
- Expands up to 25 times its thickness in case of a fire
- Quick & Easy Installation

Product Dimensions

39 3/8 in x 4 in x 2" - 17.7 in **
1000 mm x 101.6 mm x 50-450 mm*

*Nominal **Product Depth varies based on insulation/cavity size



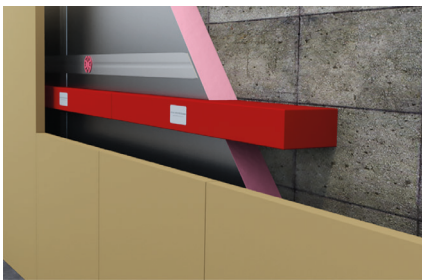
The FF102/50Plus Intumescent Fire Block is an 'open state' cavity fireblocking system for ventilated cavities and air gaps ranging from 2" up to 19.6" (500mm). Its main application is in façade systems incorporating combustible insulation, where it provides critical fire-stopping performance without impeding necessary ventilation.

The FF102/50Plus employs Tenmat's high expansion FF102/50 intumescent material fixed to a high-density mineral wool

backing, enclosed in a protective polythene wrap.

The FF102/50Plus can be mechanically fixed both horizontally and vertically within concealed spaces behind panels in rainscreen or cladding systems. The open space between the Tenmat material and cladding allows for airflow and moisture dissipation while in a fire, the intumescent material rapidly expands to seal off the cavity and prevent the spread of flames and heat.

Intumescent in Action

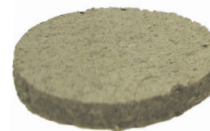


Open-State Cavity allows for:

- ✓ Ventilation
- ✓ Moisture dissipation
- ✓ Improved insulation

Fire Activated Intumescent

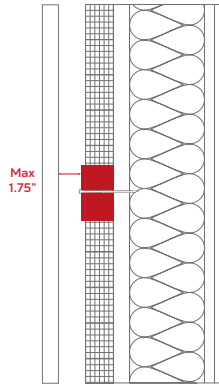
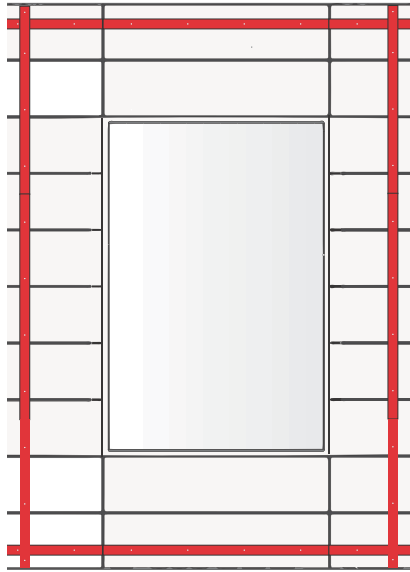
- ✓ Closes air cavity gap
- ✓ Prevents flame spread
- ✓ Effective fire block



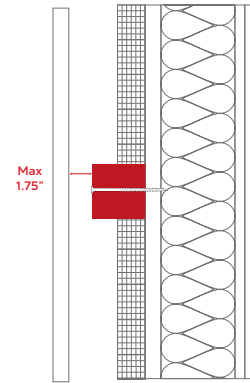
Intumescent material expands at 375° F up to 25x its original thickness.

FF102/50Plus Applications

IBC 718.2.6 (Examples)

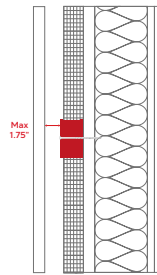
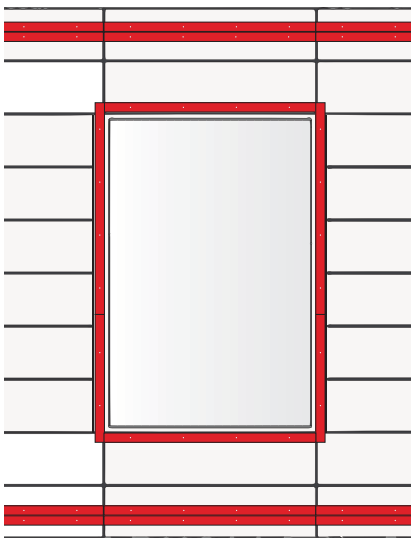


FF102/50Plus directly attached to external sheathing

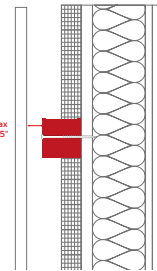


FF102/50Plus, up to (measurement) for extended internal cavities.

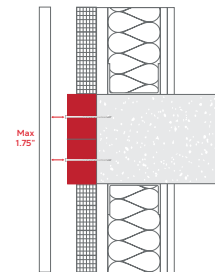
NYC BC 718.2.6.1 (Examples)



FF102/50Plus directly attached to external sheathing



FF102/50Plus, up to (measurement) for extended internal cavities.



Floor Assembly with 8" fireblocking zone