

FF102/50

Rainscreen Fire Block

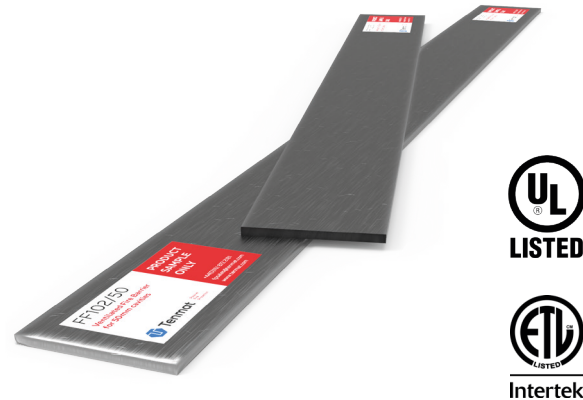
Key Features

- NFPA285 Fire Tested
- UL Listed
- ETL Listed
- NYC OTCR/DOB approved material in accordance with the 2022 NYC Building Code Section 718.2.1
- Continuous Free Air Space up to 2" (50mm)
- Allows for air circulation and moisture dissipation
- Quick & Easy Installation
- Expands up to 25 times of its thickness in case of a fire

Product Dimensions

39 3/8 in x 3 in x 1/4 in *
1000 mm x 75 mm x 6 mm

*Nominal



Tenmat's FF102/50 Fire Blocks for ventilated rainscreen systems are high expansion intumescent seals offering industry leading performance as an 'open state' cavity fire barrier.

The product has undergone extensive fire testing, including NFPA 285 at Intertek and UL and is suitable for use with construction types I through V, enabling the versatile system to be specified with confidence and provide the installer with

a simple, time saving and site friendly solution.

Tenmat's innovative Fire Blocks for Rainscreen Systems are rigid, highly expansive intumescent strips, designed to maintain the open ventilated cavity in normal conditions. In the event of a fire, the strips will expand to seal off the cavity and serve as a fire barrier. The FF102/50 can be mechanically fixed both horizontally and vertically within ventilated cavities behind rainscreen or cladding systems.

Intumescent in Action

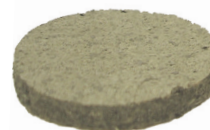


Open-State Cavity allows for:

- ✓ Ventilation
- ✓ Moisture dissipation
- ✓ Improved insulation

Fire Activated Intumescent

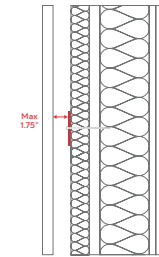
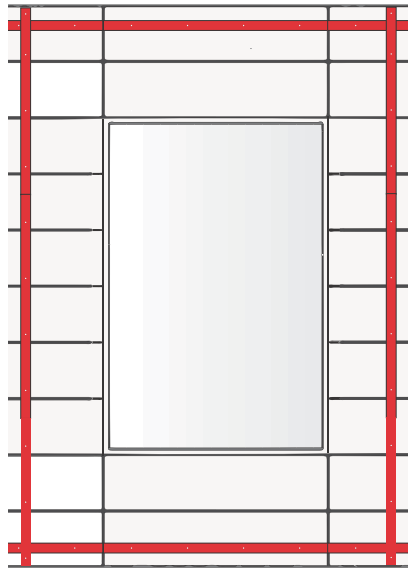
- ✓ Closes air cavity gap
- ✓ Prevents flame spread
- ✓ Effective fire block



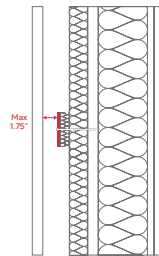
Intumescent material expands at 375° F up to 25x its original thickness.

FF102/50 Applications

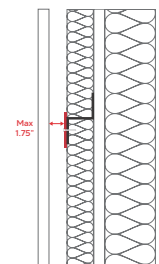
IBC 718.2.6 (Examples)



FF102/50 on mineral wool thru-fixed to sheathing board

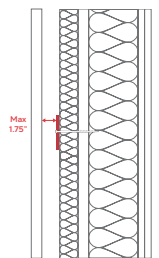
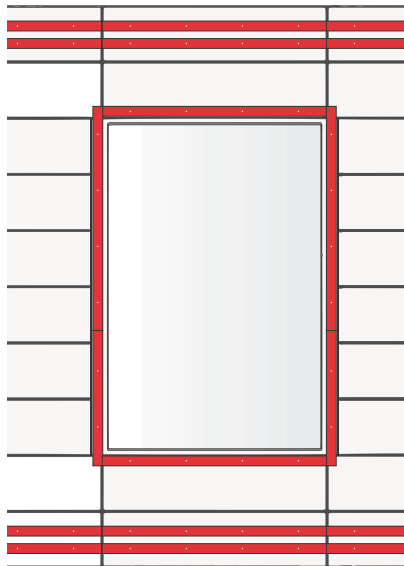


FF102/50 on additional mineral wool packer

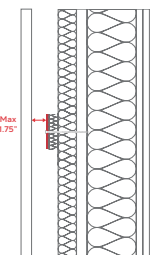


FF102/50 fixed directly to Z Girt

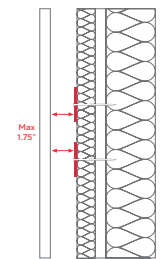
NYC BC 718.2.6.1 (Examples)



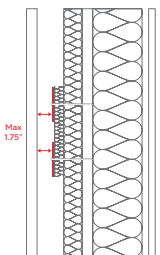
FF102/50 on mineral wool thru-fixed to sheathing board



FF102/50 on additional mineral wool packer



2x FF102/50 to form 8" high fireblocking zone



2x FF102/50 to form 8" high fireblocking zone on additional mineral wool packer