



XHEZ.C-AJ-1744 - Through-penetration Firestop Systems

Design/System/Construction/Assembly Usage Disclaimer

- Authorities Having Jurisdiction should be consulted in all cases as to the particular requirements covering the installation and use of UL Certified products, equipment, system, devices, and materials.
- Authorities Having Jurisdiction should be consulted before construction.
- Fire resistance assemblies and products are developed by the design submitter and have been investigated by UL for compliance with applicable requirements. The published information cannot always address every construction nuance encountered in the field.
- When field issues arise, it is recommended the first contact for assistance be the technical service staff provided by the product manufacturer noted for the design. Users of fire resistance assemblies are advised to consult the general Guide Information for each product category and each group of assemblies. The Guide Information includes specifics concerning alternate materials and alternate methods of construction.
- Only products which bear UL's Mark are considered Certified.

XHEZ - Through-penetration Firestop Systems

See General Information for Through-penetration Firestop Systems

System No. C-AJ-1744

July 09, 2020

ANSI/UL1479 (ASTM E814)

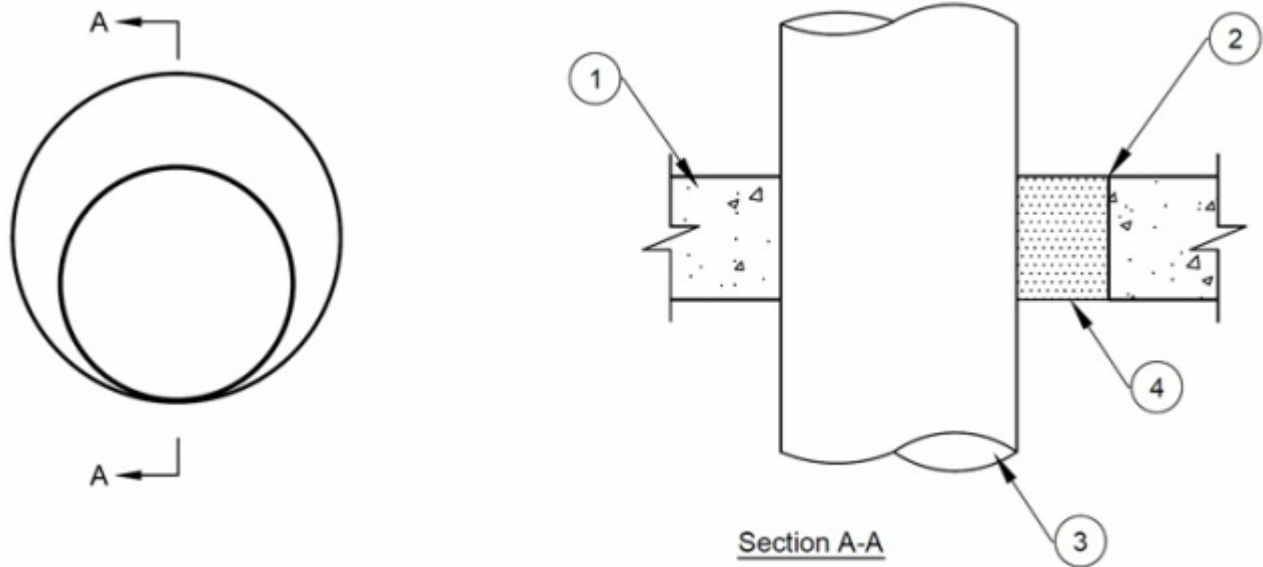
F Rating — 2 Hr
T Rating — 1/2 Hr

Cookies on UL

We use cookies to personalize content and ads, to provide social media features and to analyze our traffic. We also share information about your use of our site with our social media, advertising and analytics partners.. [Learn More](#)

[> Cookie Settings](#)

Accept



1. **Floor or Wall Assembly** — Min 4-1/2 in. (114 mm) thick reinforced lightweight or normal weight (100 - 150 pcf or 1600-2400 kg/m³) concrete. Wall may also be constructed of any UL Classified **Concrete Blocks***. Max diam of opening is 12 in. (305 mm).

See **Concrete Blocks** (CAZT) category in the Fire Resistance Directory for names of manufacturers.

2. **Metallic Sleeve** — (Optional) — Max 8 in (203 mm) diam Schedule 10 (or heavier) steel pipe cast or grouted into floor or wall flush with floor or wall surfaces.

3. **Through Penetrant** — One metallic pipe, tubing or conduit installed concentrically or eccentrically within the firestop system. The annular space between the pipe, tubing or conduit and the periphery of the opening shall be min 0 in. (point contact) to max 4 in. (102 mm). Pipe, tubing or conduit to be rigidly supported on each side of the floor assembly. The following types and sizes of metallic pipes, tubing or conduit may be used:

A. **Steel Pipe** — Nom 8 in. (203 mm) diam (or smaller) Schedule 10 (or heavier) steel pipe.

B. **Iron Pipe** — Nom 8 in. (203 mm) diam (or smaller) Schedule 10 (or heavier) cast or ductile pipe.

C. **Conduit** — Nom 8 in. (203 mm) diam (or smaller) rigid steel conduit.

D. **Conduit** — Nom 8 in. (203 mm) diam (or smaller) steel electrical metallic conduit.

E. **Copper Pipe** — Nom 4 in. (102 mm) diam (or smaller) Regular (or heavier) copper pipe.

F. **Copper Tubing** — Nom 4 in. (102 mm) diam (or smaller) Type L (or heavier) copper tubing.

4. **Firestop System** — The firestop system shall consist of the following:

A. **Fill, Void or Cavity Material*** — Min 4-1/2 in. (114 mm) thickness of material to fill opening within the annulus.

TENMAT INC — Fire Protection Foam FF360

Cookies on UL

We use cookies to enhance your navigation, improve site content, and to analyze our usage. We also share information about your use of our site with our social media, advertising and analytics partners.. [Learn More](#)

*** Indicates such products shall bear the UL or cUL Certification Mark for jurisdictions employing the UL or cUL Certification (such as Canada), respectively.**

[Cookie Settings](#)

Accept

Last updated: 20-07-09

The appearance of a company's name or product in this database does not in itself assure that products so identified have been manufactured under UL's Follow-Up Service. Only those products bearing the UL Mark should be considered to be Certified and covered under UL's Follow-Up Service. Always look for the Mark on the product.

UL permits the reproduction of the material contained in the Online Certification Directory subject to the following conditions: 1. The Guide Information, Assemblies, Constructions, Designs, Systems, and/or Certifications (files) must be presented in their entirety and in a non-misleading manner, without any manipulation of the data (or drawings). 2. The statement "Reprinted from the Online Certifications Directory with permission from UL" must appear adjacent to the extracted material. In addition, the reprinted material must include a copyright notice in the following format: "© 2020 UL LLC"

Cookies on UL

We use cookies to personalize content and ads, to provide social media features and to analyze our traffic. We also share information about your use of our site with our social media, advertising and analytics partners.. [Learn More](#)

[> Cookie Settings](#)

Accept