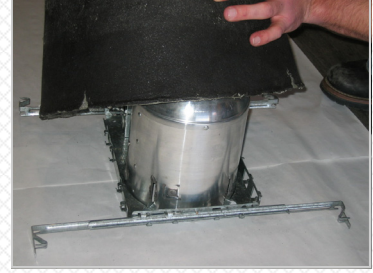


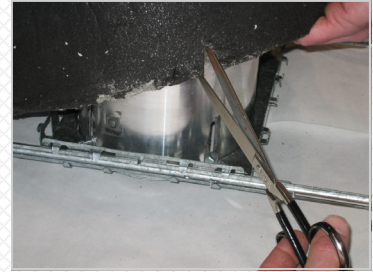
Step 1

Hanger bars of the light fixture shall be screwed to the joists in addition to the tabs being hammered into the joists, following the light manufacturer's installation instruction.



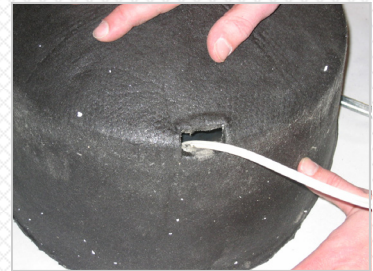
Step 2

Place Tenmat FF109 cover over the fixture.
Slit the cover to fit over the hanger bars of the fixture.
Cut four slits with a size up to 1" max.



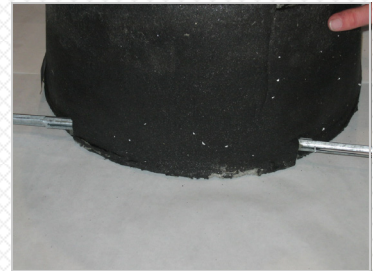
Step 3

The wire can be fed through one of the cover vent holes located at the top.
Follow the light manufacturer instructions to make proper connections.



Step 4

Put the cover on top of the fixture. Check for secure fit, and make sure the cover overhangs the hanger bars.
The FF 109 Light Cover must fit flush with the back surface of the drywall board.



Ensure the cover fits your chosen recessed light fixture.

FF109-350 Overall Dimensions:

- Inside Diameter 15"
- Inside Height 10 3/8"



Intertek

WARNING: BE SURE THE ELECTRICITY TO THE SYSTEM YOU ARE WORKING ON IS TURNED OFF; EITHER THE FUSE REMOVED OR THE CIRCUIT BREAKER SET AT OFF.

CONTAINS STONE WOOL INSULATION

Stone fibers may cause temporary mechanical irritation to the skin, throat, nose and eyes.

FIRST AID

Skin

If irritation occurs, do not rub or scratch. Rinse under running water prior to washing with mild soap and water. Consult a physician if irritation persists.

Throat and Eyes

If irritation occurs, flush eyes with water and/or drink water to clear throat. Do not rub the eyes. Consult a physician if irritation persists.

PRECAUTIONS

- Wear long sleeve, loose fitting clothing, gloves and eye protection.
- For additional information, refer to the Material Safety Data Sheet (MSDS).